

Product Highlights

- No wasted shades with only one TrusFIL-Universal shade, changing your restoration routine
- Take the guesswork out of finding the accurate shades matching patients' natural teeth
- Exceptional longevity with low shrinkage of only 1.06%
- Impressive physical properties due to TrusFIL Nanofiller technology
- 3.5 mm depth of cure – Utilize 400–500 nm LED curing lights with an output of at least 800 mW/cm² for a minimum duration of 10 seconds.
- Easy to polish, highly stain resistant with a high gloss

Multiple Indications

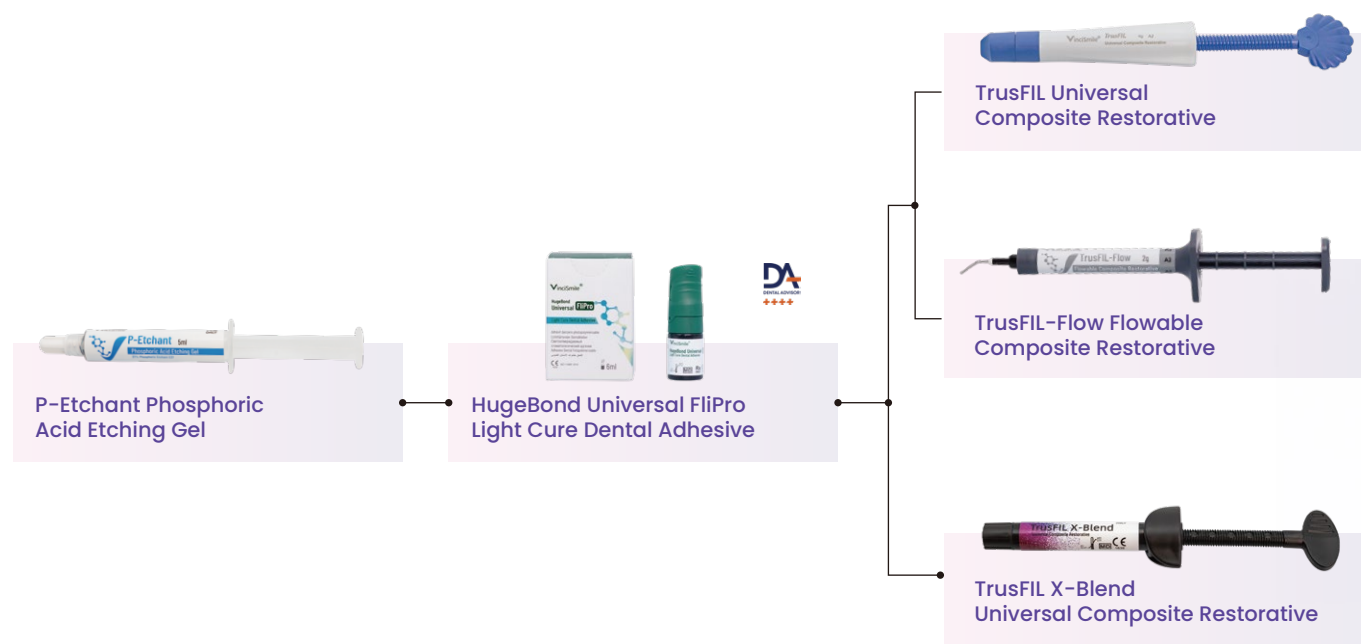
- Direct anterior and posterior restorations (including occlusal surfaces)
- Core Build-ups
- Splinting
- Indirect restorations including inlays, onlays and veneers

With TrusFIL X-Blend, achieving a natural and harmonious restoration has never been easier. Experience the future of aesthetics restoration with a innovative composite that truly matches every patient.



TrusFIL Direct Restorative Solution

Much Simpler, More Durable, More Smiles



Perfectly Integrating into Your Clinical Practices

HUGE

HUGE DENTAL USA LLC
Web: www.hugedentalusa.com
Add: 4010 Valley Blvd STE 104, Walnut, CA 91789, USA
Email: info@hugedentalusa.com Tel: +1 626 283 5808

*specifications are subject to change without prior notice)

V25.5.29

f o y in
Follow @HUGE Dental USA

VinciSmile®

TrusFIL X-Blend

ONE syringe for ALL ranges of teeth shades



*Ultimate Color-Matching
Composite Restorative*

Simplicity, Aesthetics & Better Longevity.....

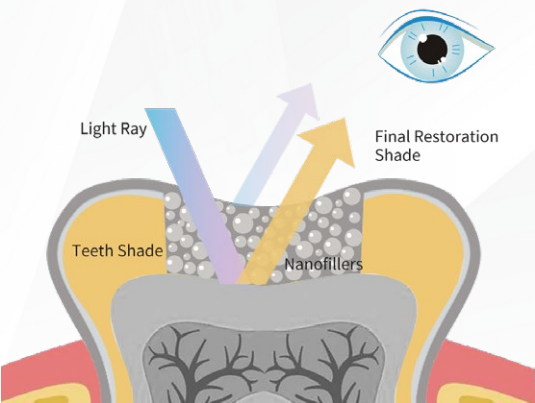
Perfect Aesthetic Results



One single shade matches all VITA 16 shades.

Simple Process —One Shade Fits All

Innovative TrusFIL Technology:
Utilizing special fillers and innovative TrusFIL Technology, TrusFIL X-blend exhibits succeeds in covering all shades in only ONE universal shade composite. When TrusFIL X-Blend is filled into the cavity, the colors and optical properties, the resin-covered tooth structure underneath, and the remaining exposed tooth structure all interact. That's how these factors together affect light interaction and lead to **the Chameleon Effect**.



* Data from VinciSmile dental lab.

Excellent Longevity

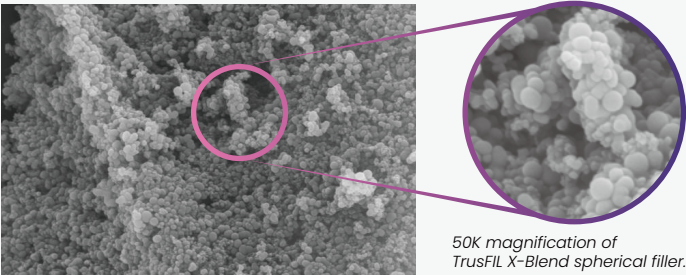
Strengthened Properties & Color Consistency

TrusFIL X-Blend is an upgraded composite, delivers an amazing shade-matching magic without compromising strength.

The accelerated stability tests show that the aging product still has impressive color stability after water absorption or light exposure, and has excellent staining resistance and reliable temperature stability compared to leading Composites.

Color stability	Control group	Absorb water after aging	Light exposure after aging	High temperature stability	Before 60°C for a week	After 60°C for a week	Staining resistance	/	Before aging		After aging	
									X-Blend	Brand A	X-Blend	Brand A

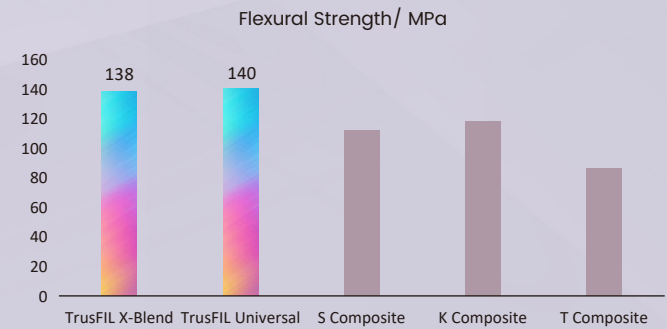
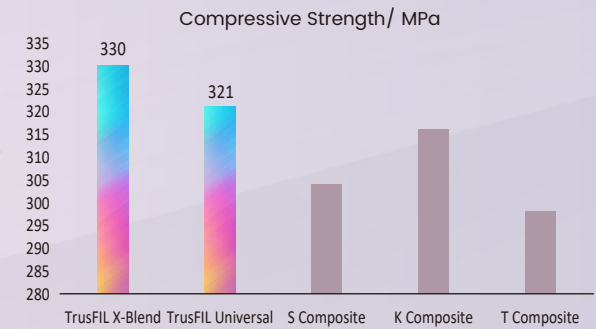
TrusFIL's leading filler technology results in excellent physical properties and outstanding polish.



Flexural Strength/Mpa	138 Mpa
Polymerization shrinkage/ %	0.8 %
Elastic Modulus/ GPa	11.5 GPa
Water Absorption/ $\mu\text{g}/\text{mm}^3$	18.2 $\mu\text{g}/\text{mm}^3$
Solubility/ $\mu\text{g}/\text{mm}^3$	0.5 $\mu\text{g}/\text{mm}^3$
Depth of Curing/ mm	3.5 mm

* All data from VCS lab

▲ Take the guesswork out of selecting the composite shade with this innovative color-matching technique that creates the perfect match.



▲ Compared to TrusFIL Universal, TrusFIL X-Blend shows a quite similar performance in practice, and provides an easier operation.